



## 35 The Knoll

Plympton, Plymouth, PL7 4SH

**Offers Over £375,000**



Situated in a popular location, with many attractive features including a beautifully-fitted kitchen/diner & a lounge opening to a balcony, with elevated views across Plympton to the river & a newly-installed non-slip resin driveway. The property has been fully renovated to an exceptionally high standard & has a lovely, enclosed south-westerly facing rear garden including a sunny patio area - ideal for entertaining.



THE KNOLL, PLYMPTON, PLYMOUTH PL7 4SH

ACCOMMODATION

Composite door, with an inset obscured glass panel, opening into the entrance hall.

ENTRANCE HALL 19'2" x 7'10" (5.851 x 2.408)

Doors providing access to the accommodation. Access hatch, with loft ladder to partially-boarded loft void.

KITCHEN/DINER 23'6" x 8'10" (7.170 x 2.713)

A triple aspect room with 2 uPVC double-glazed windows to each side and another to the rear elevation. The kitchen is fitted with a range of matching base and wall-mounted units incorporating a complementary roll-edged worktop and inset 4-burner Hotpoint gas hob with Hotpoint extraction over. Integrated. Black composite one-&-a-half bowl sink unit with mixer tap and detachable handle. Hotpoint oven and grill. Space and plumbing for a washing machine. Space and plumbing for a dishwasher. Space for an American-style fridge/freezer. Space for a dining table. The kitchen area has tiled flooring with carpeting in the dining area. Wooden door, with inset obscured glass panel, opening to the side porch.

LOUNGE 12'0" x 11'0" (3.683 x 3.359)

The room features a media wall with contemporary cladding to either side, including an inset tv and a feature burning log-effect fireplace beneath. Double doors opening onto the balcony.

BALCONY 19'1" x 9'7" (5.82 x 2.94)

The balcony is laid to composite deck with a stainless-steel-&-glass balustrade, providing ample space for outside furniture and offering beautiful views over the rear garden, to Plympton and towards the estuary.

BEDROOM ONE 11'9" x 13'10" (3.604 x 4.217)

uPVC double-glazed window to the front elevation.

BEDROOM TWO 13'9" x 11'7" (4.214 x 3.536)

A versatile room - previously used as a lounge, with a uPVC double-glazed bay window to the front elevation overlooking the front garden. Modern feature gas fireplace with a marble surround.

BATHROOM 7'10" x 5'6" (2.409 x 1.688)

A new bathroom has just been fitted to include a double walk-in shower, vanity unit with inset sink and a close-coupled wc. The walls and floors are fully-tiled. Obscured uPVC double-glazed window to the rear elevation.

INTEGRAL GARAGE

Situated beneath the house and accessed by an up-&-over door to the front. Power and lighting. Further door opening to the sub floor storage area.

SUB-FLOOR CELLAR 12'2" x 7'10" (3.73 x 2.41)

A useful area which could be used as a workshop or utility area. The room has power, water and lighting, a fitted wc and a wall-mounted Glow-Worm combi boiler.

OUTSIDE

The property is accessed by non-slip resin steps, and a handrail, leading down to the front door with bordering areas of lawn and decorative inset shrubs. To the side of the bungalow a sweeping driveway leads to double gates, in turn leading to the rear and providing ample off-road parking. Immediately adjacent to the rear of the property is a generous, sunny, patio seating area, perfect for entertaining, with steps leading down to areas of lawn. The garden is fully enclosed by fencing, decorated with various inset shrubs.

COUNCIL TAX PCC

Plymouth City Council  
Council Tax Band:D

SERVICES

The property is connected to all the mains services: gas, electricity, water and drainage.

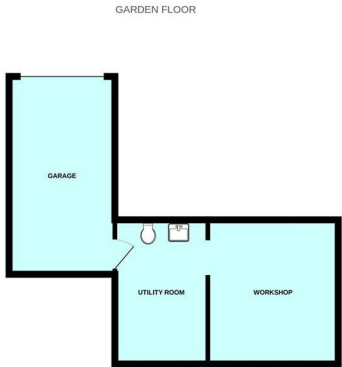
WHAT3WORDS

///chase.button.rewarding

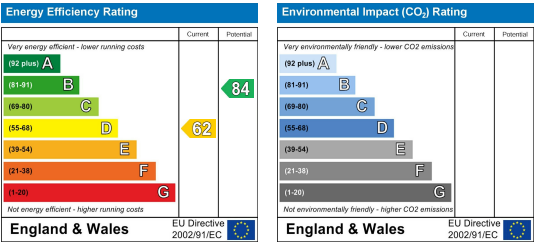
Area Map



Floor Plans



Energy Efficiency Graph



These particulars, whilst believed to be accurate are set out as a general outline only for guidance and do not constitute any part of an offer or contract. Intending purchasers should not rely on them as statements of representation of fact, but must satisfy themselves by inspection or otherwise as to their accuracy. No person in this firms employment has the authority to make or give any representation or warranty in respect of the property.